



Centre of

75inO 
DIVERSITY IN ENERGY

Expertise
Gender & Energy





Boardroom



Livingroom

IPCC 2023 6th Assessment

AR6 Synthesis Report

C.5

Equity and Inclusion

Prioritising **equity**, climate justice, **social justice**, **inclusion** and **just transition** processes can enable adaptation and ambitious mitigation actions and climate resilient development.

Adaptation outcomes are enhanced by increased support to regions and **people with the highest vulnerability to climatic hazards**. Integrating climate adaptation into social protection programs improves resilience.

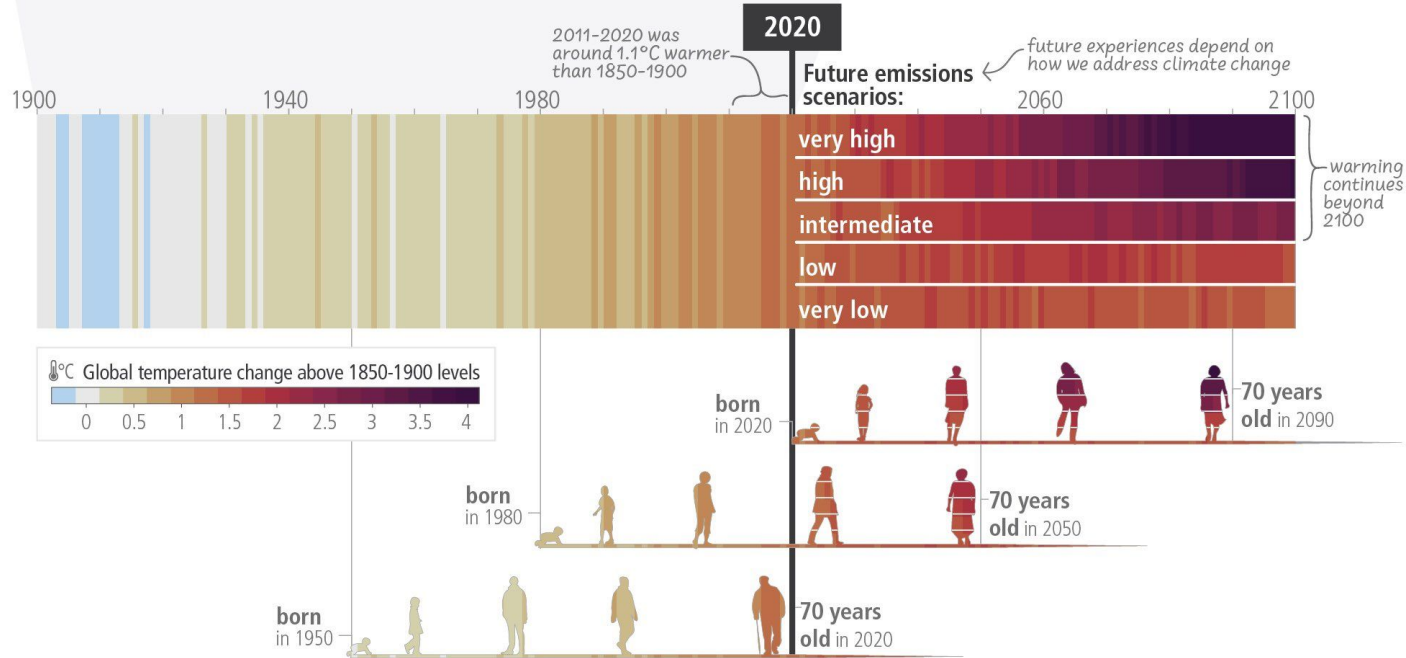
Many options are available for reducing emission-intensive consumption, including through behavioural and lifestyle changes, with **co-benefits for societal well-being**.
(high confidence) {4.4, 4.5}

IPCC 2023 6th Assessment

AR6 Synthesis Report



c) The extent to which current and future generations will experience a hotter and different world depends on choices now and in the near-term



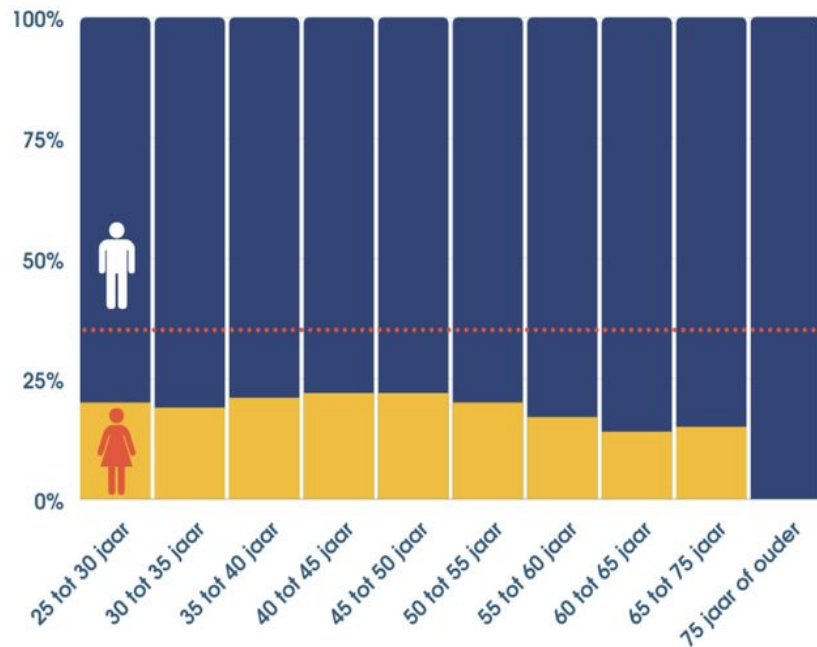


All hands on deck?

Acceleration of the energy-transition requires

- Innovation
- Decision Quality
- Community Support
- Speed. Godspeed.

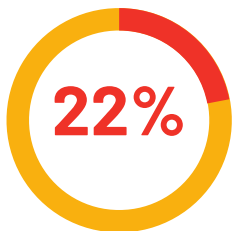
..boost when people with different perspectives combine their knowledge and creativity.



Arbeidsparticipatie vrouwen



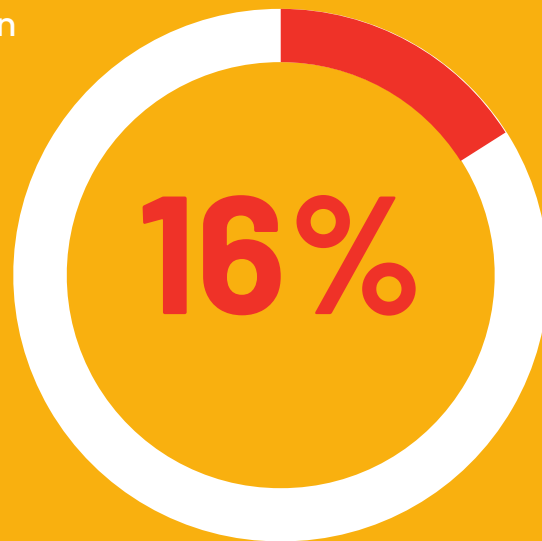
7% van de technische beroepen wordt vervuld door vrouwen



< 22% van de werknemers in de energiesector is vrouw.

Energiesector Nederland

Van de werknemers in de energiesector, ouder dan 45 jaar, is 16% vrouw



2020 CBS